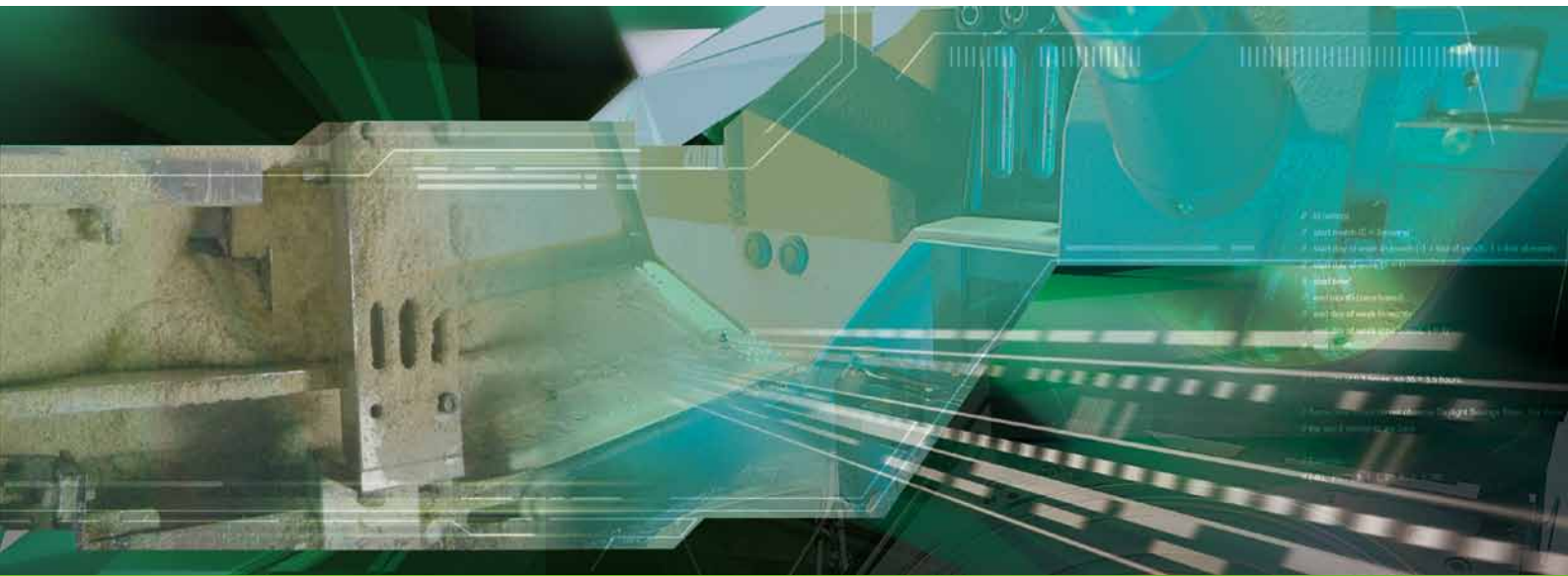
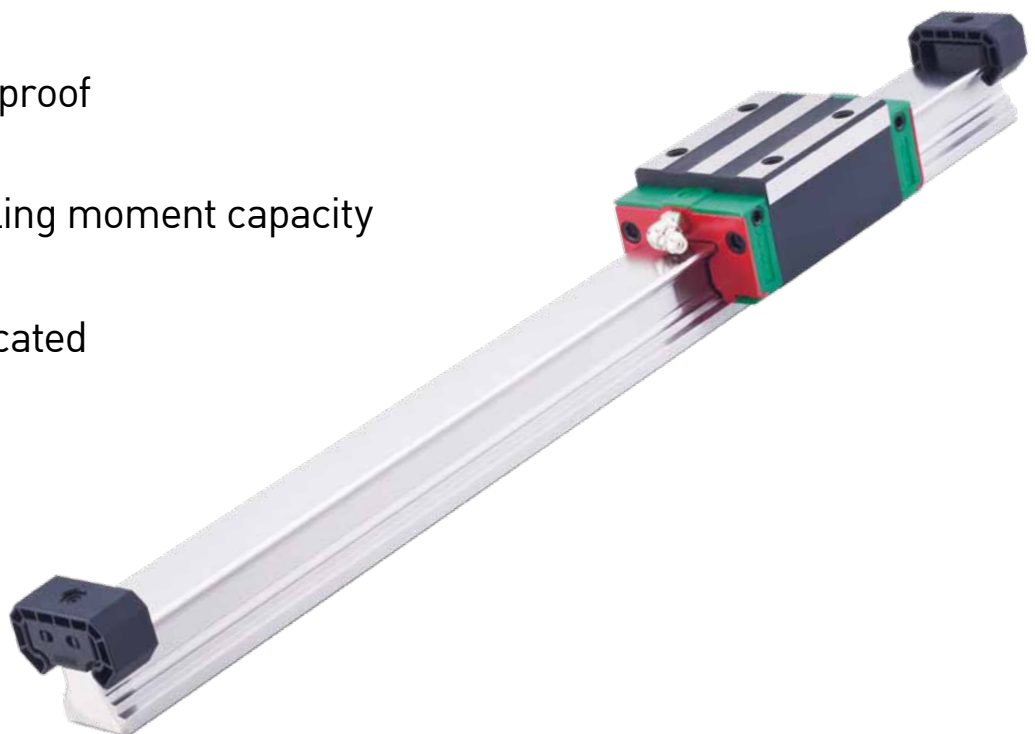


Superior Rolling Moment with Cover Strip

Linear Guideway **CG** Series

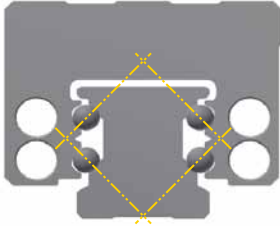


- High dust-proof
- Higher rolling moment capacity
- Fully lubricated

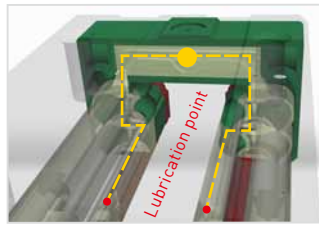


Features

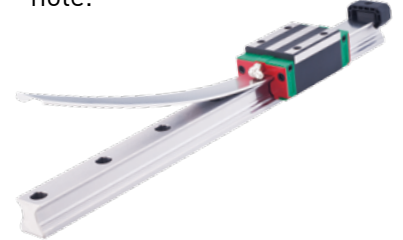
- **O-type Configuration**
 - Higher rolling moment capacity



- **New lubrication path design**
 - Fully lubricated



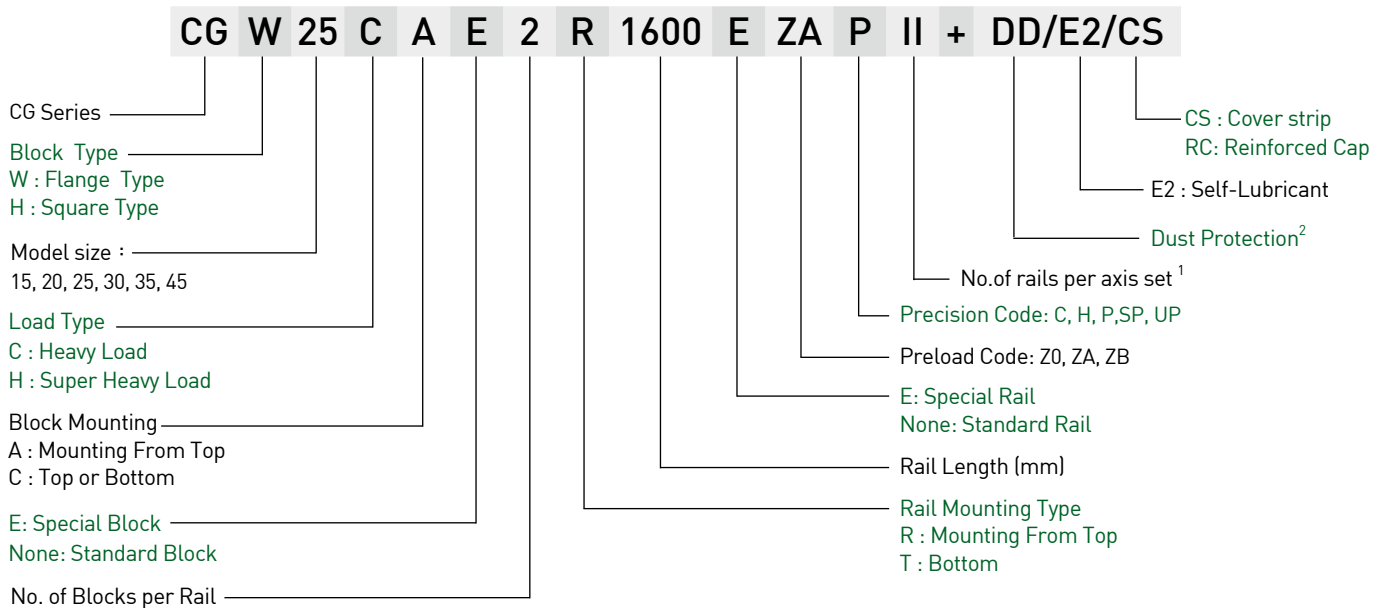
- **Rail with cover strip**
 - Stainless steel material
 - Quick installation
 - Protects wiper seal from fastener damage.
 - Protects block from particles that could collect in mounting hole.



Applications

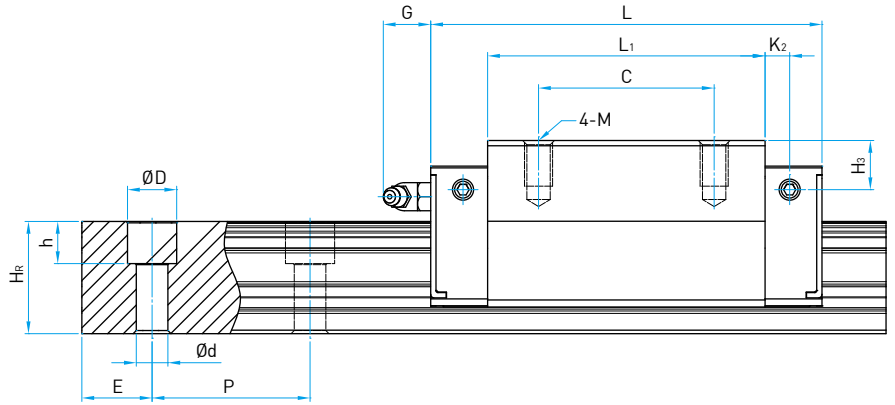
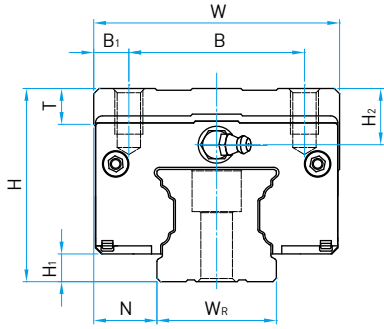
- Woodworking Machine
- Machine Tool
- Grinding Machine
- Handling Equipment
- Automatic Equipment

Non-interchangeable type



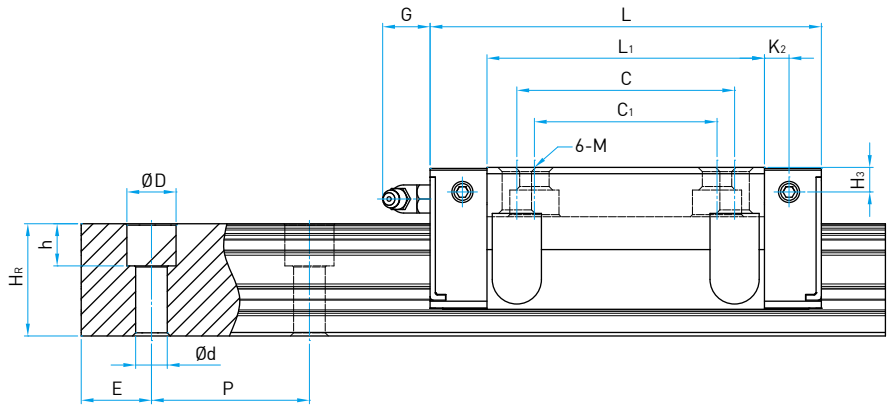
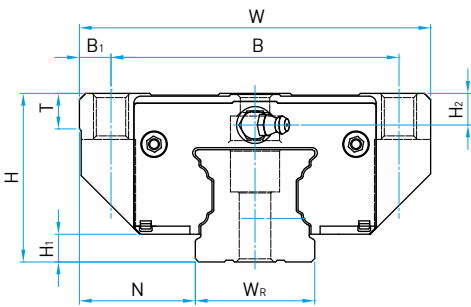
Note: 1. The roman numerals express a matched set of rails.
2. No symbol indicates standard protection(end seal, bottom seal and scraper)
DD : double seals and bottom seal

Dimensions for CG-H

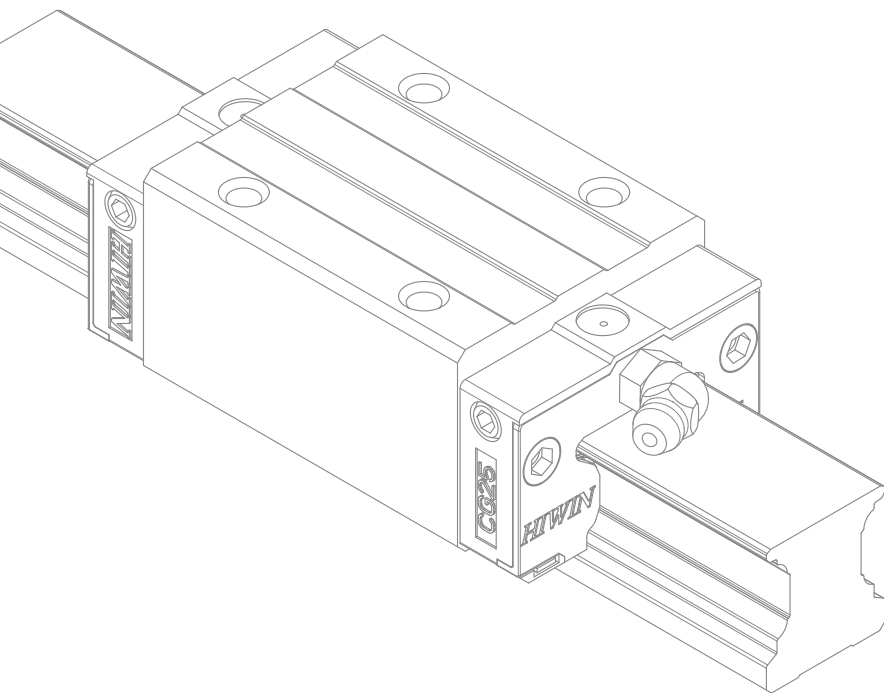


Model No.	Dimensions of Assembly (mm)			Dimensions of Block (mm)									Dimensions of Rail (mm)						Basic Dynamic Load Rating	Basic Static Load Rating
	H	H ₁	N	W	B	B ₁	C	L ₁	L	G	M × l	T	W _R	H _R	D	h	d	P	C [kN]	C ₀ (kN)
CGH15CA	28	4.1	9.5	34	26	4	26	39.2	58.2	6	M4 × 5	6	15	16.2	7.5	5.3	4.5	60	13.8	18.02
CGH15HC	28	4.1	9.5	34	26	4	26	53.6	72.6	6	M4 × 5	6	15	16.2	7.5	5.3	4.5	60	17.6	25.53
CGH20CA	30	4.6	12	44	32	6	36	52.5	74.9	6	M5 × 6	8	20	20.55	9.5	8.5	6	60	23.7	30.51
CGH20HC	30	4.6	12	44	32	6	50	68.5	90.9	6	M5 × 6	8	20	20.55	9.5	8.5	6	60	28.6	39.9
CGH25CA	40	6.1	12.5	48	35	6.5	35	61	84	12	M6 × 8	8	23	24.25	11	9	7	60	34.96	43.94
CGH25HC	40	6.1	12.5	48	35	6.5	50	78.6	104.6	12	M6 × 8	8	23	24.25	11	9	7	60	42.18	57.46
CGH30CA	45	7	16	60	40	10	40	69	97.4	12	M8 × 10	9.5	28	28.35	14	12.35	9	80	46	55.19
CGH30HC	45	7	16	60	40	10	60	92.3	118.9	12	M8 × 10	9.5	28	28.35	14	12.35	9	80	58.59	78.18
CGH35CA	55	7.6	18	70	50	10	50	79	111.4	12	M8 × 13	10.2	34	31.85	14	12	9	80	61.17	79.3
CGH35HC	55	7.6	18	70	50	10	72	105	137.4	12	M8 × 13	10.2	34	31.85	14	12	9	80	77.9	112.34
CGH45CA	70	9.7	20.5	86	60	13	60	97.8	137.8	12.9	M10 × 17	16	45	39.85	20	17	14	105	97.63	133
CGH45HC	70	9.7	20.5	86	60	13	80	132.3	172.3	12.9	M10 × 17	16	45	39.85	20	17	14	105	124.43	217.2

Dimensions for CG-W



Model No.	Dimensions of Assembly (mm)			Dimensions of Block (mm)									Dimensions of Rail (mm)						Basic Dynamic Load Rating	Basic Static Load Rating	
	H	H ₁	N	W	B	B ₁	C	C ₁	L ₁	L	G	M × l	T	W _R	H _R	D	h	d	P	C [kN]	C ₀ (kN)
CGW15CC	24	4.1	16	47	38	4.5	30	26	39.2	58.2	6	M5	6	15	16.2	7.5	5.3	4.5	60	13.8	18.02
CGW15HC	24	4.1	16	47	38	4.5	30	26	53.6	72.6	6	M5	6	15	16.2	7.5	5.3	4.5	60	17.6	25.53
CGW20CC	30	4.6	21.5	63	53	5	40	35	52.5	74.9	6	M6	6.5	20	20.55	9.5	8.5	6	60	23.7	30.51
CGW20HC	30	4.6	21.5	63	53	5	40	35	68.5	90.9	6	M6	6.5	20	20.55	9.5	8.5	6	60	28.6	39.9
CGW25CC	36	6.1	23.5	70	57	6.5	45	40	61	84	12	M8	7	23	24.25	11	9	7	60	34.96	43.94
CGW25HC	36	6.1	23.5	70	57	6.5	45	40	78.6	104.6	12	M8	7	23	24.25	11	9	7	60	42.18	57.46
CGW30CC	42	7	31	90	72	9	52	44	69	97.4	12	M10	10.5	28	28.35	14	12.35	9	80	46	55.19
CGW30HC	42	7	31	90	72	9	52	44	92.3	118.9	12	M10	10.5	28	28.35	14	12.35	9	80	58.59	78.18
CGW35CC	48	7.6	33	100	82	9	62	52	79	111.4	12	M10	10.1	34	31.85	14	12	9	80	61.17	79.3
CGW35HC	48	7.6	33	100	82	9	62	52	105	137.4	12	M10	10.1	34	31.85	14	12	9	80	77.9	112.34
CGW45CC	60	9.7	37.5	120	100	10	80	60	97.8	137.8	12.9	M12	15.1	45	39.85	20	17	14	105	97.63	133
CGW45HC	60	9.7	37.5	120	100	10	80	60	132.3	172.3	12.9	M12	15.1	45	39.85	20	17	14	105	124.43	217.2



HIWIN®

Motion Control and System Technology

HIWIN TECHNOLOGIES CORP.

No. 7, Jingke Road,
Taichung Precision Machinery Park,
Taichung 40852, Taiwan
Tel: +886-4-23594510
Fax: +886-4-23594420
www.hiwin.tw
business@hiwin.tw

Subsidiaries & R&D Centers

HIWIN GmbH
OFFENBURG, GERMANY
www.hiwin.de
www.hiwin.eu
info@hiwin.de

HIWIN JAPAN
KOBE · TOKYO · NAGOYA · NAGANO ·
TOHOKU · HOKURIKU · HIROSHIMA ·
KUMAMOTO · FUKUOKA, JAPAN
www.hiwin.co.jp
info@hiwin.co.jp

HIWIN USA
CHICAGO · SILICON VALLEY, U.S.A.
www.hiwin.com
info@hiwin.com

HIWIN Srl
BRUGHERIO, ITALY
www.hiwin.it
info@hiwin.it

HIWIN Schweiz GmbH
JONA, SWITZERLAND
www.hiwin.ch
info@hiwin.ch

HIWIN FRANCE
ECHAUFFOUR, FRANCE
www.hiwin.fr
info@hiwin.fr

HIWIN s.r.o.
BRNO, CZECH REPUBLIC
www.hiwin.cz
info@hiwin.cz

HIWIN SINGAPORE
SINGAPORE
www.hiwin.sg
info@hiwin.sg

HIWIN KOREA
SUWON, KOREA
www.hiwin.kr
info@hiwin.kr

HIWIN CHINA
SUZHOU, CHINA
www.hiwin.cn
info@hiwin.cn

**Mega-Fabs Motion System,
Ltd.**
HAIFA, ISRAEL
www.mega-fabs.com
info@mega-fabs.com